



Exalate Price Change for Jira (April 2022)

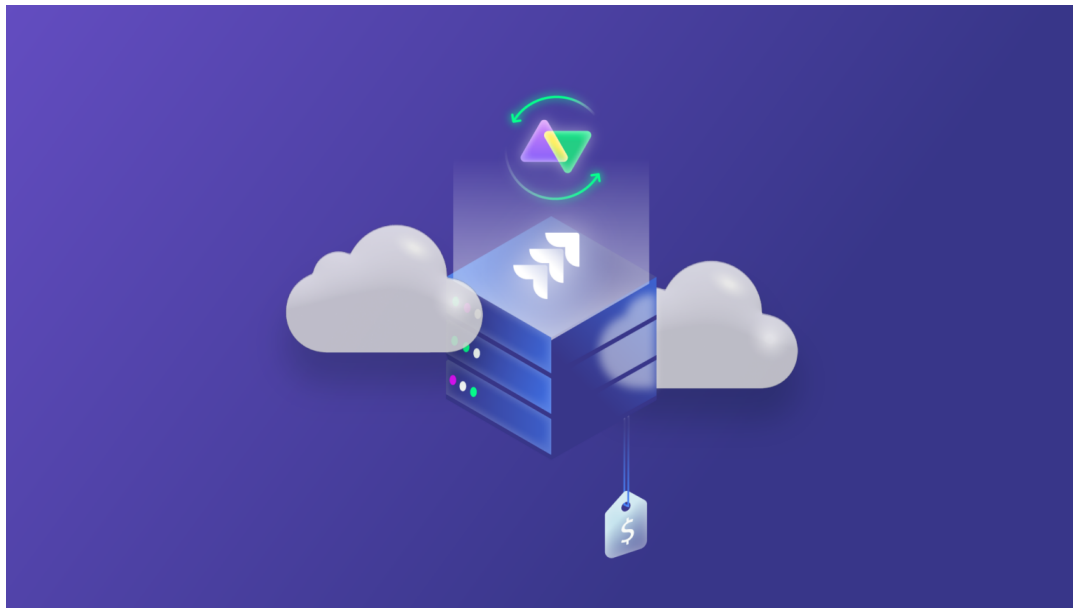


Table of contents

What does it mean for you?

Exalate Pricing Change for Jira Data Center (Yearly Subscription)

Exalate Pricing Change for Jira Server

Exalate Pricing Change for Jira Cloud (Annual Billing - 1 Year)

Atlassian Cloud Security Participant

And the Other Supported Issue Trackers?



To continue servicing our customers better and to meet our ambitious roadmap, we are making large investments in R&D this year. We also want to ensure the security and maintenance of our apps are optimized.

So as of **April 4, 2022**, we are increasing our pricing for Jira Server and Jira Data Center imparticular for all user tiers. But on the flip side, we decided to revise some discrepancies our users brought to our attention in cloud pricing. Which actually leads to a decrease in our pricing for the highest tiers of Jira Cloud.

What does it mean for you?

- The current pricing will apply to quotes and purchases made before April 4, 2022.
- Once the pricing change goes into effect on April 4, new customers will pay updated prices immediately
- The new prices also apply to renewals after April 4, 2022. If you decide to renew before this date, the current pricing is retained. That includes Server maintenance renewals as well.

Exalate Pricing Change for Jira Data Center (Yearly Subscription)

DATA CENTER	OLD PRICE	NEW PRICE
Up to 10 users	1760	2000
Up to 100 users	3000	2300
Up to 250 users	3950	3400
Up to 500 users	5000	4000
Up to 750 users	6000	4325
Up to 1000 users	7300	4425
Up to 2000 users	9000	4875
Up to 3000 users	4300	4900
Up to 4000 users	4550	5175
Up to 5000 users	4900	5425
Up to 6000 users	5000	5675
Up to 7000 users	5300	5925
Up to 8000 users	5900	6175
Up to 9000 users	6750	6425
Up to 10000 users	5800	6675
Up to 11000 users	6100	7000
Up to 12000 users	6300	7300
Up to 13000 users	6500	7500
Up to 14000 users	6700	7800
Up to 15000 users	6900	8000
Up to 20000 users	7500	8000
Up to 25000 users	8900	10000
Up to 30000 users	9900	11000
Up to 35000 users	10850	12000
Up to 40000 users	11950	13000
Up to 45000 users	12650	13000
Up to 50000 users	13650	14000
60001+ users	14750	16000

Exalate Pricing Change for Jira Server

The prices below apply to new Server sales. Maintenance renewal prices are at 50% of the new price.

SERVER	OLD PRICE	NEW PRICE
Up to 10 users	99	99
Up to 25 users	460	550
Up to 50 users	700	840
Up to 100 users	1150	1470
Up to 250 users	2300	3300
Up to 500 users	3500	5270
Up to 2000 users	4600	6830
Up to 10000 users	6900	9720
10001+ users	9200	11210

Exalate Pricing Change for Jira Cloud (Annual Billing - 1 Year)

Prices listed for Cloud are based on **annual billing**.

CLOUD	OLD PRICE	NEW PRICE
10 users	50	50
15 users	150	150
25 users	250	250
50 users	500	500
100 users	1000	1000
200 users	1500	1500
300 users	1875	1875
400 users	2125	2125
500 users	2375	2375
600 users	2625	2625
800 users	3125	3125
1000 users	3625	3625
1200 users	4125	4105
1400 users	4625	4585
1600 users	5125	5065
1800 users	5625	5545
2000 users	6125	6025
2500 users	7375	7225
2750 users	8000	7800
3000 users	8625	8375
3500 users	9875	9525
3750 users	10500	10100
4000 users	11125	10675
4250 users	11750	11250
4500 users	12375	11825
5000 users	13625	12975
5500 users	14875	14075
7500 users	19875	18475
10000 users	26125	22975
15000 users	38625	28975
20000 users	51125	31975



Atlassian Cloud Security Participant

As an [Atlassian's Bug Bounty Program](#) participant, Exalate will continue to prioritize the app security and to get ahead of vulnerabilities and security issues.

It's always been our primary mission to improve the user experience, so we'll be focusing more on our reliability as we invest in the Cloud features.

And the Other Supported Issue Trackers?

Exalate is a Jira app that enables you to set up a flexible Jira integration, correct.

But it also supports a two-way sync between multiple issue trackers like ServiceNow, Salesforce, Azure DevOps, Zendesk, GitHub (including GitHub Enterprise Cloud, and more. (Check out [this page](#)).

The Exalate pricing for those tools will **not** be changing at the moment.

If you want to see how Exalate can be tailored for your specific use case, [book a demo](#) with one of our experts.