



Exalate Price Change for All Connectors (February 2023)

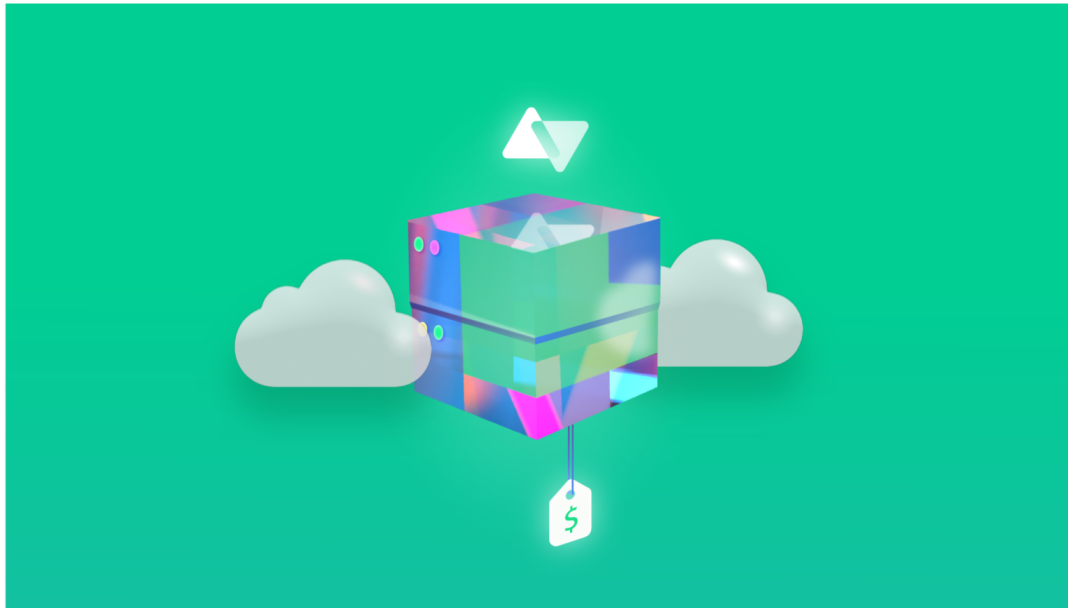


Table of contents

- What does it mean for you?
- Exalate for Jira Cloud
- Exalate for Jira Server
- Exalate for Jira Data Center
- Exalate for Other Systems
- FAQs:



Starting **February 15, 2023**, we are increasing prices for all Exalate products and services by approximately 15%.

Exalate infrastructure relies on many other tools, which have already increased their prices. We also want to ensure that the level of service delivery remains in line with your expectations and beyond.

What does it mean for you?

- The current pricing will apply to quotes and purchases made before February 15, 2023.
- Once the pricing change goes into effect on February 15, new customers will pay updated prices immediately
- The new prices also apply to renewals after February 15, 2023. If you decide to renew before this date, the current pricing is retained. That includes Server maintenance renewals as well.

Exalate for Jira Cloud

Exalate for Jira Cloud	Old Monthly Price per user	New Monthly Price per user
User Tier		
10 users	5	6
11-100 users	1	1,15
101-250 users	0,5	0,6
251-1000 users	0,25	0,3
1001-2500 users	0,24	0,27
2501-5000 users	0,23	0,25
5001-7500 users	0,22	0,25
7501-10000 users	0,18	0,2
10001-15000 users	0,12	0,15
15001-20000 users	0,06	0,07
20001-25000 users	0,06	0,07
25001-30000 users	0,06	0,07
30001-35000 users	0,06	0,07

Exalate for Jira Server

Exalate for Jira Server	Old Annual Price	New Annual Price
Up to 10 users	99	115
Up to 25 users	550	635
Up to 50 users	840	965
Up to 100 users	1,470	1,690
Up to 250 users	3,300	3,795
Up to 500 users	5,270	6,060
Up to 2000 users	6,830	7,855
Up to 10000 users	9,720	11,180
10001+ users	11,210	12,895



[BOOK DEMO](#)

Exalate for Jira Data Center

Exalate for Jira DC	Old Annual Price	New Annual Price
User Tier		
Up to 50 users	2,000	2,300
Up to 100 users	2,300	2,645
Up to 250 users	3,450	3,965
Up to 500 users	4,000	4,600
Up to 750 users	4,325	4,975
Up to 1000 users	4,425	5,085
Up to 2000 users	4,675	5,380
Up to 3000 users	4,925	5,670
Up to 4000 users	5,175	5,950
Up to 5000 users	5,425	6,240
Up to 6000 users	5,675	6,525
Up to 7000 users	5,925	6,815
Up to 8000 users	6,175	7,100
Up to 9000 users	6,425	7,390
Up to 10000 users	6,675	7,680
Up to 11000 users	7,000	8,050
Up to 12000 users	7,250	8,340
Up to 13000 users	7,500	8,625
Up to 14000 users	7,750	8,915
Up to 15000 users	8,000	9,200
Up to 20000 users	9,000	10,350
Up to 25000 users	10,000	11,500
Up to 30000 users	11,000	12,650
Up to 35000 users	12,000	13,800
Up to 40000 users	13,000	14,950
Up to 45000 users	14,000	16,100
Up to 50000 users	15,000	17,250
50001+ users	16,000	18,400



Exalate for Other Systems

	Old Monthly Price unlimited users, billed annually	New Monthly Price unlimited users, billed annually
Exalate for GitHub	95	115
Exalate for Zendesk	95	115
Exalate for Azure DevOps	295	335
Exalate for Salesforce	295	335
Exalate for Servicenow	825	945
Exalate for HP QC/ALM	825	945



[BOOK DEMO](#)

FAQs:

- **Can I still purchase Exalate at an old price if my quote is already issued?**

Yes, if your quote is still valid.

- **Can I request a quote with an old price before February 15?**

Yes, you can still request a quote before February 15. Quotes are valid for 30 days.

- **Can I purchase a subscription for more than 1 year at the old price?**

Yes, that is possible, if you ask for a quote before 15 February and the payment is done before the quote is expired.

- **Does it mean I should pay the new price when the renewal time comes?**

Yes, after February 15, 2023, the new prices apply to renewals.

If you have any questions, please reach out to sales@exalate.com.